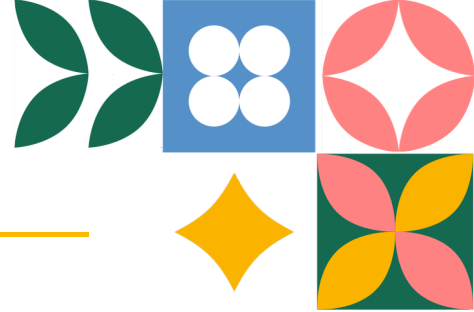




YOUTH ASSEMBLY PARTNER ORGANIZATIONS

TERMS OF REFERENCE

2026



Background

The World Food Forum's (WFF) [Youth Assembly](#), led by the [Youth Policy Board](#) (YPB), serves as a year-round open, inclusive and structured platform for young people to co-create and engage in discussions about various agrifood systems related issues. It brings together young individuals, youth organizations and youth constituencies to discuss specific policy topics within agrifood systems and develop joint recommendations and solutions that can be brought into intergovernmental processes and translated into programmatic actions.

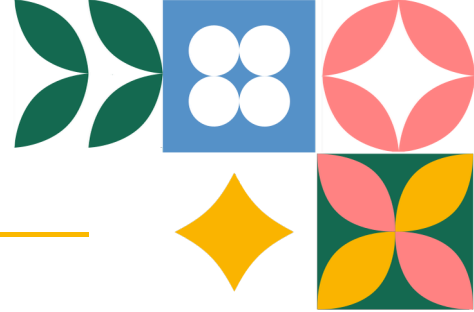
In 2026, the WFF Youth Assembly will host various thematic Youth Assembly sessions and consultations based on 11 themes to address critical challenges and develop youth-led recommendations for agrifood systems transformation:

- [Biodiversity](#)
- [Bioeconomy](#)
- [Climate Change](#)
- [Desertification, land degradation and drought](#)
- [Fisheries and Aquaculture](#)
- [Forestry](#)
- [Livestock](#)
- [Nutrition](#)
- [Water Management](#)
- [Young Women's Empowerment](#)
- Resilience

To ensure the success of these Thematic Youth Assembly sessions and consultations, the WFF Youth Assembly invites applications from youth-led and focused organizations with relevant expertise to serve as co-organizers of sessions and consultations. As part of its effort to institutionalize partnerships within its processes, the WFF Youth Assembly encourages both existing and new partner organizations to apply.

Objective

The objective of this call for applications is to identify and engage global stakeholders and partners with proven expertise in the above-mentioned themes, to co-organize Thematic Youth Assembly sessions and consultations. Selected Partner Organizations will engage in a maximum of two thematic processes and work closely with the WFF Youth Assembly Secretariat and the YPB members to deliver impactful, youth-centric sessions and outcomes that contribute to agrifood systems transformation.



Scope of work

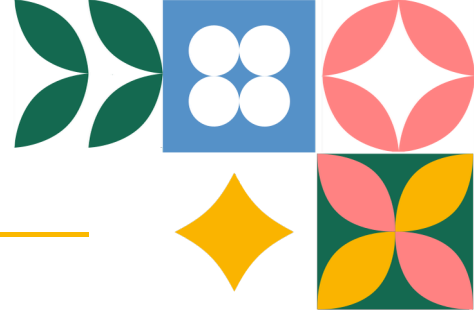
Under the leadership of the YPB and supported by the WFF Youth Assembly Secretariat, selected Partner Organizations will be expected to contribute to the Youth Assembly's sessions and consultations by:

- Collaborating on planning and execution: Actively participate in the planning and execution of the Youth Assembly sessions and consultation on the selected theme(s);
- Providing expertise: Share expertise and resources, including technical knowledge, research and innovative solutions relevant to the theme;
- Contributing to consultation design: Assist in designing interactive and engaging sessions and consultations that resonate with youth audiences;
- Nominating speakers and moderators: Identify and provide qualified speakers and moderators to contribute insights and facilitate dialogue in sessions and consultations on the selected theme(s);
- Supporting youth-centric approaches: Ensure that the consultations agenda, discussions and outputs are youth-driven and aligned with the priorities of young people;
- Facilitating social media outreach: Promote the selected Youth Assembly sessions and consultations on official social media platforms to expand audience engagement and visibility; and
- Ensuring integration into policy processes: Support the WFF Youth Assembly in presenting the youth-led recommendations and outcomes in intergovernmental agrifood decision making processes.

Eligibility criteria

To be eligible, organizations must:

- Be global in scope, with demonstrated expertise and experience in the selected theme(s);
- Have a proven track record of working on initiatives related to agrifood systems, biodiversity, climate change, development or other relevant areas;
- Be committed to youth engagement and empowerment in the context of agrifood systems transformation;
- Be able to allocate members and a contact point to work closely with the WFF Youth Assembly Secretariat and YPB members; and
- Align with the WFF Youth Assembly's core values of integrity, responsibility and collaboration, as well as adhere to the highest ethical standards.



Terms of engagement

To ensure effective collaboration and uphold the WFF Youth Assembly's core values, selected Partner Organizations will be expected to adhere to the following terms of engagement:

- Designation of contact points: Provide one primary and one secondary focal point to maintain consistent communication with the Youth Assembly Secretariat and YPB;
- Sustained engagement: Commit to regular participation in planning meetings, consultations and session-related activities throughout the 2026 cycle;
- Responsive communication: Ensure timely responses to coordination requests, shared documents and session timelines;
- Collaborative representation: Support joint engagement at conferences, events and communication initiatives when relevant and agreed by all parties.
- Documentation and contribution: Provide inputs for session materials, youth-led recommendations and summary reports.

Thematic Youth Assembly sessions and consultations timeline

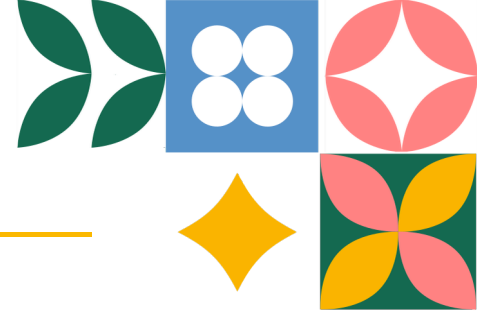
Thematic Youth Assembly sessions and consultations will take place throughout 2026. Specific timelines for planning, coordination and execution will be communicated to selected partners.

This partnership will be for an entire Calendar Year (until December 2026) and at the end of the cycle, the WFF Youth Assembly Secretariat will analyze the partnership based on the contributions of partners and decide on further engagement.

Evaluation criteria and selection process

Applications will be evaluated based on the following criteria:

- Global operational scale;
- Relevance and alignment with the selected theme(s);
- Demonstrated expertise and track record on selected theme(s);
- Capacity to contribute with members and a contact point;
- Commitment to youth engagement and empowerment; and
- Alignment with the WFF Youth Assembly's core values of integrity, responsibility and collaboration, as well as adhere to the highest ethical standards.



The selection process for Youth Assembly Partner Organizations will consist of two main steps. First, the Youth Assembly Secretariat will carry out a preliminary assessment to verify eligibility and relevance based on the established selection criteria. Eligible organizations will then be reviewed by the YPB, which will assess the shortlisted candidates according to their strategic alignment with the Youth Assembly's objectives.

The selection results will be communicated by February 2026 via e-mail. Shortlisted organizations may be contacted for additional discussions.

Optional engagement

In addition to co-organizing Thematic Youth Assembly sessions and consultations, selected Partner Organizations may also engage with other programmes of the WFF Youth Initiative ([Education](#), [Culture](#), [Local Action](#) and [Innovation](#)) if they wish to do so. The Youth Assembly Secretariat can facilitate these introductions and ensure clear and coordinated communication channels. Any additional activities or joint initiatives with other WFF Youth Initiative programmes will be collaboratively developed and agreed upon by the partner organization, the Youth Assembly secretariat and the respective programme.

Contact information

For further inquiries, please contact:

WFF Youth Assembly Secretariat

Email: Youth-Assembly-Partnerships@world-food-forum.org.

Additional information

- World Food Forum Youth Initiative [website](#)
- World Food Forum Youth Initiative [brochure](#)
- World Food Forum Youth Assembly [brochure](#)
- 2025 WFF Youth Assembly [Partner Organizations](#)

Join Us!

Be part of this transformative initiative to empower youth and drive agrifood systems transformation. Together, we can create a sustainable future for all.