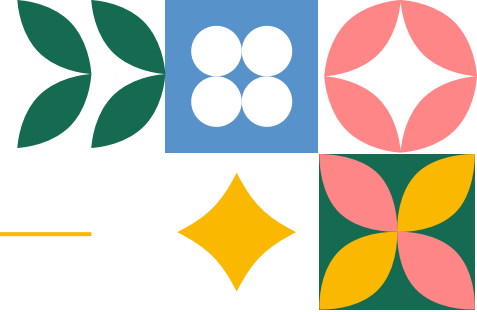




YOUTH ASSEMBLY PARTNER ORGANIZATIONS

TERMS OF REFERENCE

2025



Background

The World Food Forum's (WFF) [Youth Assembly](#), led by the [Youth Policy Board \(YPB\)](#), serves as a year-round, open, inclusive and structured platform for young people to co-create and engage in policy discussions on agrifood systems. It brings together young individuals, youth-led entities, organizations and constituencies to address specific policy topics and develop joint recommendations and solutions that can be presented in intergovernmental processes and translated into concrete actions.

To ensure the success and impact of these processes, the WFF Youth Assembly collaborates with Partner Organizations. These organizations play a key role in co-developing Youth Assembly sessions and contributing to the Youth Assembly processes with expertise, innovation and strategic support.

For the 2025 cycle, the Youth Assembly will focus on ten critical themes in agrifood systems transformation:

- [Biodiversity](#)
- [Bioeconomy](#)
- [Climate Change](#)
- [Desertification, land degradation and drought](#)
- [Fisheries and Aquaculture](#)
- [Forestry](#)
- [Livestock](#)
- [Nutrition](#)
- [Water Management](#)
- [Young Women's Empowerment](#)

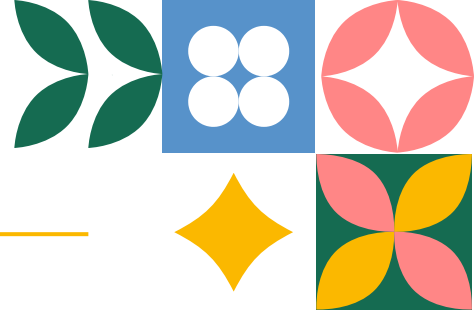
Objective

The objective of the Youth Assembly Partner Organizations programme is to institutionalize collaboration with organizations that can provide expertise, networks and youth engagement support within priority themes. Partner Organizations work closely with the WFF Youth Assembly Secretariat and YPB members to ensure the design and delivery of impactful, youth-centric sessions and consultations that contribute to agrifood systems transformation.

Scope of work

Under the leadership of the YPB and supported by the WFF Youth Assembly Secretariat, Partner Organizations are expected to:

- Collaborate on planning and execution: Actively participate in the planning and execution of Youth Assembly sessions on their respective theme(s);
- Provide expertise: Share knowledge and resources, including technical expertise, research and innovative solutions relevant to the theme;



- Contribute to consultation design: Assist in designing interactive and engaging sessions that resonate with youth audiences;
- Nominate speakers and moderators: Identify and provide qualified experts to contribute insights and facilitate dialogue in the selected theme;
- Support youth-centric approaches: Ensure that agendas, discussions and outputs are youth-driven and aligned with youth priorities;
- Facilitate social media outreach: Promote the Youth Assembly sessions across platforms to expand outreach and visibility; and
- Ensure integration into policy processes: Support the presentation of youth-led recommendations in intergovernmental processes.

Eligibility criteria

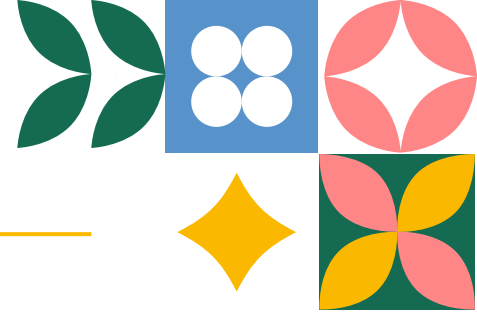
Partner Organizations are expected to:

- Be global or regional in scope, with demonstrated expertise and experience in the selected theme;
- Have a proven track record in agrifood systems, biodiversity, climate change, development or other relevant areas;
- Be committed to youth engagement and empowerment in the context of agrifood systems transformation;
- Allocate members and a contact point to work closely with the WFF Youth Assembly Secretariat and YPB members; and
- Align with the WFF Youth Assembly's core values of integrity, responsibility and collaboration, and adhere to the highest ethical standards.

Deliverables

Under the guidance of the YPB, Partner Organizations contribute to:

- Developing a comprehensive session plan for the Youth Assembly sessions and consultations, including objectives, agenda and key topics;
- Identifying and confirming speakers and moderators;
- Designing engagement strategies to ensure active youth participation;
- Contributing inputs to the development of youth-led recommendations for agrifood systems transformation; and
- Advising the YPB and Youth Assembly Secretariat on the preparation of a summary report capturing key discussions, outcomes and follow-up actions.



Timeline

This partnership is valid for one Youth Assembly cycle (2025). At the end of the cycle, the WFF Youth Assembly Secretariat will review contributions and determine future collaboration.

Contact information

For further information, please contact:

WFF Youth Assembly Secretariat

Email: Youth-Assembly-Partnerships@world-food-forum.org

Through this collaborative framework, the WFF Youth Assembly and its Partner Organizations will work together to empower youth, deliver impactful thematic processes and advance transformation of global agrifood systems.